

GOLD 金山 MOUNTAIN

Les Deux Mondes & Unitytheatre

<http://www.lesdeuxmondes.com/goldmountain/en/index.html>

Informations

Unitytheatre

1 Hope Place Liverpool
UNITED KINGDOM L1 9BG
Phone: 0151 702 7368

I

Informations & Technique

Les Deux Mondes

7285 Chabot Montréal (Québec)
CANADA H2E 2K7
Phone : 1-514-593-4417



Gold Mountain
Technical rider preliminary

The Cargo of the show includes 6 road cases whose largest measures 180cm x 100cm x 80cm and the smallest measuring 80 cm x 60 cm x 60 cm.

Minimum Stage Requirements :

- Width of stage opening: 8.53 Meters (28 feet) and up.
- Width - wall to wall on stage : 12.20 Meters (40 feet) and up
- Depth – edge of stage to cyclorama position: 7.62 Meters (25 feet) and up.
- Clear height under pipes: 4.90 Meters (16 feet) and up.

The show can be presented in halls of various sizes, from mid to large. The creative team works with the aim of proposing a show that may be suitable for more intimate places with technical equipment suitable for the dimensions of the stage. Please send your space plans.

Set-up : 4 calls of 4 hours (2 days) with pre-hanging.

Strike : 2 hours

Technical Crew for Set-up and Strike :

4 lights

1 sound

1 video

3 set

- Fly technicians as required for your equipment.

See Appendix 1 for a typical set-up schedule.

Gold Mountain
Technical rider preliminary

Equipment provided by Host:

Sound PA:

- Two (2) ways (FOH)
- One (1) separate output for Sub Woofers.
- Two (2) full-range monitors hung backstage Left and Right in front of Cyclorama.
- Two (2) surround monitors (big halls only).
- Cluster (big halls only).
- Cables.

P.S. The equipment and operator (musician) occupy an area approximately 2.5m wide by 1.5m deep and must be located in the hall at the back of the audience.

Lighting:

- We bring our own board (DMX 512 protocol)
Lighting board can be located in cabin.

(See Appendix for lighting plan and instruments list.)

- 9x Leko ETC S4 19°
- 4x Leko ETC S4 26°
- 1x Leko ETC S4 36°
- 18x Leko ETC S4 ZOOM 25°/50°
- 4x Frenels 1K
- 1x PAR64 MFL
- 2x Coda 500w (optionnel)
- 3x Iris pour leko ETC S4
- 3x Boom de 6'
- 1x Boom de 12'
- 45 dimmers of 1.2KW

Gold Mountain
Technical rider preliminary

Vidéo:

- The video position should be in the audience nearby the sound position.
- If absolutely necessary, the video position could be in cabin only if view on stage is very good, with a maximum distance of 18 meters (60 feet) from the edge of stage (video multipair cable length restriction).
- There is a projector in the audience (see Appendix 2), located at the center (or in front of) the two first rows, about one meter above stage height.

Electricity:

- We arrive with an Equi=tech 64 Amp balanced power transformer.
- This is used to power all of our Sound and Video equipment.

To connect transformer we require:

- A clean, independent electrical source.
- electrical panel for a direct, bare wire hook up or Cam-lock connector hook-up of the Equi=tech
- Electrical Panel needs to be within 45 feet or 13 meters from the sound or video position.
- A technician capable of performing hook-up or certified electrician if required.

North America 120 volts

- A standard 208- (three phase) or 240-volt (mono-phase) feeder circuit.
- Two "hot" wires and one ground wire are required -- no neutral wire.
- The Equi=tech has an exterior voltage selector switch on the front panel and toggle between 208- and 240-volts.
- The transformer draws 40 amps.

Europe 220/240 volts

- 1 phase 220-240 volts, one neutral, and 1 Ground
Minimum 32 amps

Gold Mountain
Technical rider preliminary

Stage Requirements:

- The stage must be levelled (no slope 0°) .
- Stage floor must be black.
- A quick crossover should be available from Stage Right to Left.

Stage Dressing:

- Black velvet backdrop.
- 4 full sets of velvet black legs and borders.
- Blue work lights in the wings.
- Two small tables for accessories.(.50 meter (18 inches) X .50 meter (18 inches)
- 3 chart stands (lecterns).
- Ideally, possibility to screw hangers in walls.

Dressing Rooms:

- Two (2) dressing-rooms suitable for 4 people, with mirror, bathroom and sink.
- Water, juices, coffee and tea...
- Cookies, cheese, fruits...
- Laundry.

Touring Crew : 8 or 9

➤ Director	Daniel Meilleur
➤ Musician and sound	Michel Robidoux
➤ Video artist and tech	Yves Dubé
➤ Lighting tech	_____
➤ Stage manager	_____
➤ Actors	David Yip et Eugene Salleh
➤ Tour manager	(occasionally)

Gold Mountain
Technical rider preliminary
Appendix-1

Typical schedule of two days set-up (with pre-hanging).

Day 1 typical schedule

- 8.00 Crew arrival and team presentation.
- 8.15 Load-in and Set-up (stage dressing, lighting, sound and set).
- 10.00 Break
- 10.15 Set-up.
- 12.00 Lunch for all except for sound (soundcheck).
- 13.00 Lighting focus & set completion (lunch for sound).
- 15.00 Break.
- 15.15 Set-up (end of focus + video test).
- 17.00 End of Set-up diner for all.

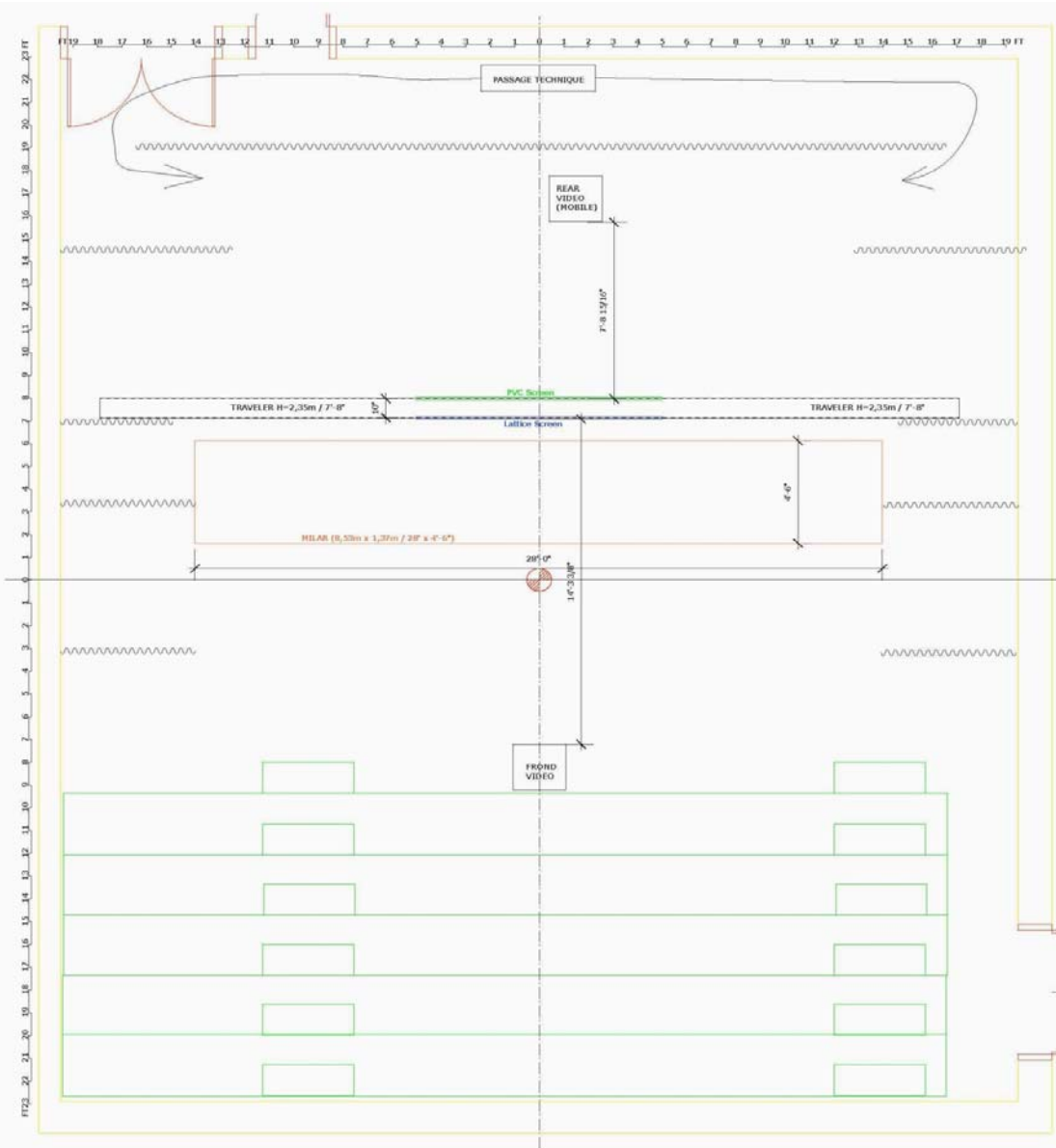
Day 2 typical schedule

- 8.00 Links
- 10.00 Break
- 10.15 Levels (sound, lights and video).
- 12.00 Lunch for all
- 13.00 Spacing with the actors
- 14.00 Rehearsal
- 15.30 Break
- 18.00 Show call
- 18.30 Sound check and stage spiking with the actors.
- 19.30 Doors opening
- 20.00 Show
- 21.15 Strike
- 24.00 Thank you and *au revoir!*

Gold Mountain

Technical rider preliminary

Appendix-2



Show Name		
GOLD MOUNTAIN		
Reference	Drawn By	Date
LES DEUX MONDES	T-Godefroid	05/11/10
CAD File Name		
Décor et habillage 1/4"=1' 11"x17"		

Gold Mountain

Technical rider preliminary

Appendix-5

GOLD MOUNTAIN Channel Hookup

Channel	Inst Type	Wattage	Color	Color2	Position	Purpose
1	Source 4 Zoom 25°-50°	575W	R132		BOOM 1 / H=0,30m	Focus sur les pieds, couper au genoux
2	Source 4 Zoom 25°-50°	575W	R132		BOOM 1 / H=0,90m	Focus ouvert large pour prendre un personnage des genoux à la tête, faire le raccord avec les rasants
3	Source 4 Zoom 25°-50°	575W	R132		BOOM 1 / H=1,50m	Focus sur le visage, couper les épaules
4	Source 4 Zoom 25°-50°	575W	R132		BOOM 2 / H=0,30m	Focus sur les pieds, couper au genoux
5	Source 4 Zoom 25°-50°	575W	R132		BOOM 2 / H=0,90m	Focus ouvert large pour prendre un personnage des genoux à la tête, faire le raccord avec les rasants
6	Source 4 Zoom 25°-50°	575W	R132		BOOM 2 / H=1,50m	Focus sur le visage, couper les épaules
7	Source 4 Zoom 25°-50°	575W	R132		BOOM3 / H=0,30m	Focus sur les pieds, couper au genoux
8	Source 4 Zoom 25°-50°	575W	R132		BOOM3 / H=0,90m	Focus ouvert large pour prendre un personnage des genoux à la tête, faire le raccord avec les rasants
9	Source 4 Zoom 25°-50°	575W	R132		BOOM3 / H=1,50	Focus sur le visage, couper les épaules
10	Source 4 Zoom 25°-50°	575W	R132		BOOM 4 / H=0,30m	Focus sur les pieds, couper au genoux
11	Source 4 Zoom 25°-50°	575W	R132		BOOM 4 / H=0,90m	Focus ouvert large pour prendre un personnage des genoux à la tête, faire le raccord avec les rasants
12	Source 4 Zoom 25°-50°	575W	R132		BOOM 4 / H=1,50m	Focus sur le visage, couper les épaules
13	Source 4 Zoom 25°-50°	575W	R119		GRID TECHNIQUE H=16'-6"	TOP FROND sur le milar
14	Source 4 Zoom 25°-50°	575W	R119		GRID TECHNIQUE H=16'-6"	TOP FROND sur le milar
15	Source 4 Zoom 25°-50°	575W	R119		GRID TECHNIQUE H=16'-6"	TOP FROND sur le milar
16	Source 4 Zoom 25°-50°	575W	R119		GRID TECHNIQUE H=16'-6"	TOP FROND sur le milar
17	Source 4 26deg	575W			GRID TECHNIQUE H=16'-6"	FOH Eugene entre les deux écrans jardin: ne pas toucher les écrans
18	Source 4 26deg	575W			GRID TECHNIQUE H=16'-6"	FOH entre les deux écrans cour: ne pas toucher les écrans pour David and Eugen (as youngman)
19	Source 4 19deg	575W	R119			DEN Front Floor light
20	Source 4 Zoom 25°-50°	575W			FLOOR H=0,40m	SP corridor tissu au sol mise entrée publique
21	Source 4 Zoom 25°-50°	575W			SOL	SP #17 THE DEN: prendre le tissu en rasant lorsqu'il est au sol jusqu'au banc du lointain. Ne pas toucher le banc
22	Source 4 26deg	575W			GRID TECHNIQUE H=16'-6"	SP #23 THE LETTERS FOH Eugene
23	Source 4 26deg	575W			GRID TECHNIQUE H=16'-6"	SP #4 THE MERCHANT SHIP: Visage de David et Eugene à l'Av-Sc, couper le petit écran
24	Source 4 19deg	575W	L202		GRID TECHNIQUE H=16'-6"	SP #7 A WOMAN CALLED : Serré sur les visage de David et Eugene lorsque les deux éventails sont ouvert, couper les éventails et légèrement flood
25	Source 4 19deg	575W	L138		GRID TECHNIQUE H=16'-6"	TOP #10 NORTH ATLANTIC serré sur le tube d'eau en acrylique et les fleurs
26	Pin Spot 30w	50W	L202	R119	SOL MOBILE branchement électrique coté Jardin	SP Eugene #11 SOO'S LAUNDRY : prendre sa tête
27	Pin Spot 30w	50W	L202	R119	SUR STRUCTURE ÉCRAN AV_SC (grillage) H=3m	SP David #11 SOO'S LAUNDRY : Prendre la tête
28	Source 4 19deg	575W	R3202		BOOM 1 / H=1,70m	SP#20 pour David intérieur moustiquaire (Cue 48)
30	PAR 64 MFL	1KW			GRID TECHNIQUE H=16'-6"	FOH pour les Saluts facultatif
31	Source 4 19deg	575W	L200+L L363+		FLOOR	SIDE #10 North Atlantic : bleue profond serré sur visage et corps de David au sol. Ne pas toucher à l'écran

Gold Mountain
 Technical rider preliminary
Appendix-6

32	FLUO	2 X 35w		FLUO MOBILE branchement coté cour	Neon Striplight SL
33	Source 4 19deg	575W		FLOOR	FOCUS Serré sur la cage à oiseau en prest début du show
34	Source 4 19deg	575W	L202	GRID TECHNIQUE H=16'-6"	SP #20 MARY'S DEPARTURE : Visage d'Eugene en haut de l'escabeau, léger flood
35	FLAME LAMPS			Accrochage sur écran métal (Alimentation électrique à cour)	#19 BURNING OF THE RIALTO
	FLAME LAMPS			Accrochage sur écran métal (Alimentation électrique à cour)	#19 BURNING OF THE RIALTO
36	SCENERY LAMPS	110V		SOL MOBILE (Alimentation électrique À COUR)	#24 THE RETURN
	SCENERY LAMPS	110V		SOL MOBILE (Alimentation électrique À COUR)	#24 THE RETURN
	SCENERY LAMPS	110V		SOL MOBILE (Alimentation électrique À COUR)	#24 THE RETURN
	SCENERY LAMPS	110V		SOL MOBILE (Alimentation électrique À COUR)	#24 THE RETURN
	SCENERY LAMPS	110V		SOL MOBILE (Alimentation électrique À COUR)	#24 THE RETURN
	SCENERY LAMPS	110V		SOL MOBILE (Alimentation électrique À COUR)	#24 THE RETURN
37	6" Fresnel 500w	750W		GRID TECHNIQUE H=16'-6"	SP SIDE bord du milar et coulisses; David à genoux dans #23 THE LETTER, couper aux écrans
38	Pin Spot 30w	50W	R3202 R3202	FLOOR	FRONT Special for Repatriation
39	Pin Spot 30w	50W		FLOOR	SP # 19 BURNING BRIDGES : VISAGE de David lorsqu'il rampe au sol à la fin de la scène" (prendre aussi le bateau en or pour les autres scènes)
40	Source 4 19deg	575W	R119		Front Floor light for Eugene in The Leaving scene
41	Source 4 36deg	575W	L124	GRID TECHNIQUE H=16'-6"	side vert pour scène final #24 THE RETURN : Prendre le tissu blanc, couper le banc
42	6" Fresnel 500w	750W		GRID TECHNIQUE H=16'-6"	SP SIDE bord du milar et coulisses; Eugene à genoux ouvre le milar, couper aux écrans
43	FLUO	2 X 35w	R3202	SUR STRUCTURE ÉCRAN AV_SC (Grillage)	SP #15 POKER GAME : Petit fluorescent accroché à la structure des écrans pour Eugène en contre plongé
44	Source 4 19deg	575W		GRID TECHNIQUE H=16'-6"	TOP #10 NORTH ATLANTIC : Serré sur la tête de David au sol, légèrement flood
49	6" Fresnel 500w	750W	L119	GRID TECHNIQUE H=16'-6"	Lumière de coulisse
	6" Fresnel 500w	750W	L119	GRID TECHNIQUE H=16'-6"	Lumière de coulisse
50	Coda 500/1	500W		GRID TECHNIQUE H=16'-6"	Services de scène facultatif
	Coda 500/1	500W		GRID TECHNIQUE H=16'-6"	Services de scène facultatif
Color	Frame Size	# Cuts			
L202	6.25"	4			
L138	6.25"	1			
R3202	6.25"	3			
R119	7.5"	4			
	6.25"	4			
R132	7.5"	12			
L124	6.25"	1			
L200+L202	6.25"	1			
L119	7.5"	2			
L363	6.25"	1			